

眉山

MEI SHAN



【投资眉山 合作共赢】

INVEST IN MEISHAN
FOR WIN-WIN COOPERATION

大江東去浪淘盡千古
風流人物故壘西邊人道
是三國周郎赤壁亂石
穿空驚濤拍岸捲
起千堆雪江山如畫一時
多少英雄
遙想當年小
初婚了雄姿美友羽扇
綸巾談笑間檣櫓
灰飛煙滅故壘
依然
故壘家平
年年歲歲人長少一
樽還酹江月

东坡醉草



中国眉山

眉山市经济合作局

Meishan Municipal Economic Cooperation Bureau

地址：眉山市东坡区东坡大道南一段 1 号投促大厦

电话/传真：028-38165120, 38165522

网址：<http://www.ms.gov.cn/tzms.htm>

Address: Investment Promotion Building, No. 1, South Section,
Dongpo Avenue, Meishan City

Tel / Fax: 028-38165120, 38165522

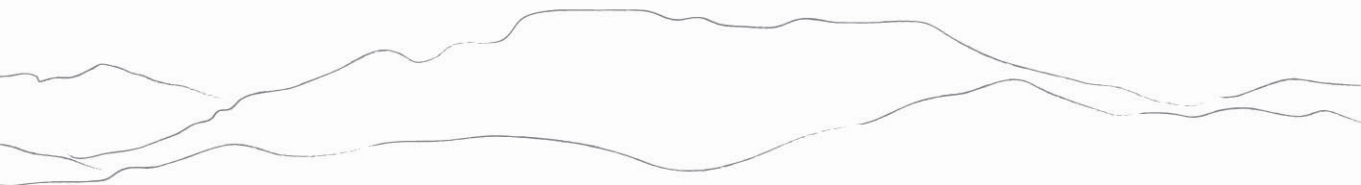
Website: <http://www.ms.gov.cn/tzms.htm>



眉山市经济合作局
Meishan Municipal Economic Cooperation Bureau

奋力建设
成都都市圈高质量发展新兴城市
制造强市、开放兴市、品质立市

AN EMERGING STAR WITH HIGH-QUALITY DEVELOPMENT
IN THE CHENGDU METROPOLITAN AREA
A CITY WITH STRONG MANUFACTURING, OPEN MIND
AND SUPERIOR QUALITY



东坡故里 天府眉山



全国文明城市
China's Civilized City



国家卫生城市
China's Sanitation City



国家森林城市
China's Forest City



国家园林城市
China's Garden City

全国行政效能先进市
全国信息消费示范城市
全国社会治安综合治理优秀市
全国首批“千兆城市”
国家新型城镇化综合试点市
国家技术创新工程试点示范市
国家节约集约利用国土资源示范市
中国发展潜力百强市
中国最美生态文化旅游城市

联合国“21世纪城市规划、管理与发展项目示范城市”
亚太旅游协会“亚太地区二、三线城市首选旅游目的地”
全球著名智库米尔肯研究院“中国最佳表现城市”

China's Advanced City in Administrative Efficiency
China's Demonstration City for Information Consumption
China's Excellent City for Comprehensive Management of Public Security
China's First Batch of Gigabit Cities

China's Comprehensive Pilot City for New Urbanization
China's Demonstration City for Technology Innovation Pilots

China's Demonstration City for Economical and Intensive Utilization of Land and Resources

China's Top 100 Cities in Development Potential

China's Most Beautiful City for Eco/Cultural Tourism

United Nations Development Programme Pilot for City Planning, Management and Development in the 21st Century

Top tourism destination in the Asia-Pacific region by Pacific Asia Travel Association

China's Best Performing City by Milken Institute

...



魅力眉山 06
Charms of Meishan

08 城市概况
About Meishan

18 生态眉山
Ecology and Environment in Meishan

16 文化眉山
Culture in Meishan

20 机遇眉山
Opportunity in Meishan

投资载体 46
Investment Vehicles

48 国家级、省级产业园区
National and provincial industrial parks

50 国家级、省级产业园区分布图
Distribution map of national and provincial industrial parks



目录 Contents

产业发展 32
Industrial Development

33 产业体系
Industrial system

34 主导产业
Leading industries

投资环境 52
Investment Environment

54 交通物流
Transportation and logistics

62 人才资源
Human resources

63 投资服务
Investment services

64 生活配套
Amenities

68 要素保障
Factors of production

70 外资政策
Foreign investment policy

72 联系方式
Contact information

东坡故里
天府眉山

PART 1



魅力眉山 Charms of Meishan



眉山城市鸟瞰
A bird's-eye view of Meishan city

城市概况 About Meishan

眉山，位于成都之南、峨眉后山、岷江之滨，是大文豪苏东坡的故乡，距离成都最近、往来交通最便捷的地级市，与成都共享国家级天府新区“金字招牌”。正积极抢抓成渝地区双城经济圈建设、成德眉资同城化发展等重大机遇，瞄准“制造强市、开放兴市、品质立市”主攻方向，奋力建设成都都市圈高质量发展新兴城市。

作为四川省委确定的“开放发展示范市”，大力实施全球招商，落户世界 500 强企业数量仅次于成都，居全省第二，招商引资国内省外到位资金连续 15 年居全省前列。2022 年，全市新签约项目 229 个，其中重大项目 54 个、百亿级制造业项目 2 个；签约合同金额 1579.7 亿元，其中制造业项目合同金额占比超过 92%，各项指标名列全省前茅，招商态势持续向好。

Meishan, located in the south of Chengdu, on the back of Mount Emei and on the shore of the Min River, is the hometown of the great poet Su Dongpo. It is the closest prefecture-level city to Chengdu and has the most convenient transportation. It seizes major opportunities such as the Chengdu-Chongqing Economic Circle and the integration of the Chengdu-Deyang-Meishan-Ziyang Metropolitan Area. It aims to build a manufacturing hub with opening and excellence, and strives to be the rising star of high-quality development in the Chengdu metropolitan area.

As a demonstration city for open development designated by the CPC Sichuan Provincial Committee, Meishan vigorously implements investment promotion around the globe. The number of Fortune 500 companies present in Meishan is second only to Chengdu, the capital city, in Sichuan province. Meishan has also been in the forefront in domestic and foreign investment realized for 15 consecutive years. In 2022, the city had 229 newly signed projects, including 54 major projects and 2 ten-billion-level manufacturing projects. The contract value reached 157.97 billion yuan, of which that of manufacturing projects accounted for more than 92%. By various indicators, Meishan has been leading Sichuan province in investment promotion with a strong momentum.

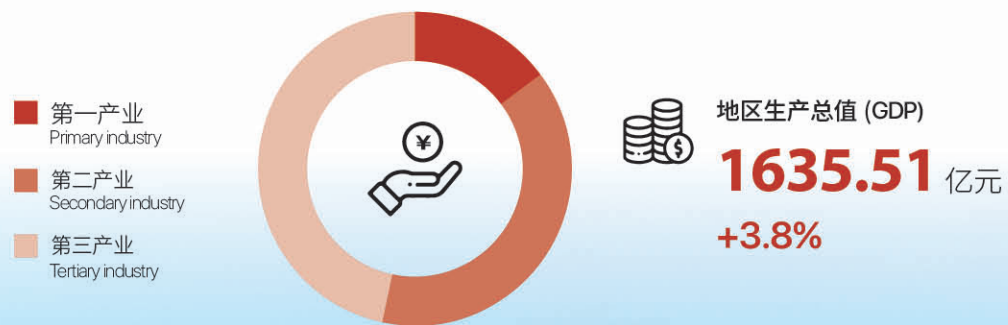
眉州古城门
Ancient City Gate of Mei Prefecture

-  **面积**
Area: 7,140km²
7140km²
-  **人口**
Population: 3.5 million
350万
-  **区号与成都共用**
028
Area code: 028 (shared with Chengdu)
-  **行政区划**
两区四县
Jurisdiction: Two districts and four counties



基本经济数据 (2022 年) Economic Performance (2022)

地区生产总值 (GDP)	1635.51 (亿元 / CNY 100 million)	+3.8%
第一产业 (Primary industry)	242.31 (亿元 / CNY 100 million)	+4.6%
第二产业 (Secondary industry)	657.61 (亿元 / CNY 100 million)	+4.6%
第三产业 (Tertiary industry)	735.59 (亿元 / CNY 100 million)	+2.9%



奋斗目标 Goals



战略牵引 Strategies



发展路径 Development path



主攻方向 Main directions



眉山是四川除成都以外落户 世界 500 强企业最多的地级市

Meishan has the largest Number of Fortune 500 Companies Beyond Chengdu in Sichuan

截至 2022 年 12 月，全市招商引资落户联合利华、陶氏化学、液化空气、昊华化工、航天科技、山东能源、阿里巴巴、华为、联想、格力、京东、苏宁、海尔、中车、中铁、中建、中粮、国机集团、新希望、伊藤洋华堂、普洛斯等世界 500 强企业 36 家，投资项目 60 个；其中，境外世界 500 强企业 10 家，投资项目 11 个。

As of December 2022, Meishan had attracted 36 Fortune 500 companies, including Unilever, Dow Chemical, Air Liquide, Haohua Chemical, Aerospace Technology, Shandong Energy, Alibaba, Huawei, Lenovo, Gree, JD.com, Suning, Haier, CRRC, China Railway, China Construction, COFCO, SINOMACH, New Hope, Ito-Yokado, and GLP. 60 investment projects had been signed, including 10 overseas Fortune 500 companies investing in 11 projects.

全市招商引资落户世界 500 强企业 Fortune 500 companies have invested in Meishan

 世界 500 强企业
Fortune 500
companies: 36
36 家

 世界 500 强企业投资项目
Investment projects of Fortune
500 companies: 60
60 个

 境外世界 500 强企业
Overseas Fortune 500
companies: 10
10 家

 境外世界 500 强企业投资项目
Investment projects of Overseas Fortune
500 companies: 11
11 个



文化眉山 Culture in Meishan

2022年6月8日，习近平总书记来川视察，亲临眉山三苏祠调研，对东坡文化给予高度评价。总书记指出：“一滴水可以见太阳，一个三苏祠可以看出我们中华文化的博大精深。我们说要坚定文化自信，中国有‘三苏’，这就是一个重要例证”。

眉山不仅是“三苏”故里、东坡文化的发源地，也是中国历史上著名的“进士之乡”，素有“千载诗书城”“人文第一州”美誉。孕奇蓄秀，名人辈出，先秦有长寿传奇彭祖，西晋有孝道典范李密，唐朝有高僧悟达，两宋有名臣田锡、虞允文、何栗，清代有蜀中才子彭端淑等。世界上最早的纸币“交子”出自眉山，古代中国三大雕版印刷中心之一位于眉山，明末江口沉银遗址也在眉山，全市有全国重点文物保护单位13处，省级文物保护单位44处，市县级文物保护单位392处。正积极推进三苏祠创建国家一级博物馆，加快申创国家历史文化名城。

On June 8, 2022, President Xi Jinping came to Sichuan for inspection, and gave high praise to Dongpo culture during his visit to the Sansu Temple in Meishan. President Xi said: "The sun can be seen through a drop of water. The Sansu Temple is a vivid embodiment of the profound Chinese culture and an excellent example of cultural confidence."

Meishan is not only the hometown of Sansu (the three poets of the Su family) and the birthplace of Dongpo culture, but produced many scholarly officials in Chinese history. It is known as a city of poetry, books and humanism. With magnificent and majestic scenery, the city is a cradle and magnet for cultural celebrities. In the pre-Qin era, there was Peng Zu, a legend of longevity. In the Western Jin Dynasty, there was Li Mi, a model of filial piety. In the Tang Dynasty, there was Wu Da, an eminent monk. Powerful ministers of the court in the Northern and Southern Song Dynasties, Tian Xi, Yu Yunwen, and He Su, were born here, so was Peng Duanshu, a talented scholar in the Qing Dynasty. Meishan gave birth to "Jiaozhi", the oldest paper currency in the world. It was one of the three engraving and printing centers in ancient China. The Jiangkou Sunken Silver Site of the late Ming Dynasty was discovered in Meishan, is on the way to be accredited as China's Historical and Cultural City. There are 13 national key cultural relics sites here, as well as 44 provincial-level sites and 392 city/county-level sites. Meishan is actively promoting the establishment of Sansu Temple as a first-class national museum, and applying for the status of a national historical and cultural city.



国家级重点文保单位
13 national key cultural
relics sites

13处

省级文保单位
44 provincial-level
cultural relics sites

44处

市县级文保单位
392 city/county-level
cultural relics sites

392处



江口沉银
虎钮永昌大元帅金印
The golden tiger seal of Grand
Marshal Yongchang unearthed from
the Jiangkou Sunken Silver Site



三苏祠
Sansu Temple



大雅堂
Hall of Elegance



“两宋荣光”建筑群
Building Complex of Glory of the Northern and Southern Song Dynasties



青神竹编
Qingshen Bamboo Weaving



彭祖山
Pengzu Mountain



东坡水街
Dongpo Water Street

生态眉山 Ecology and Environment in Meishan

眉山，介岷峨之间，为江山秀气所聚，山川秀美、生态宜居，是国家卫生城市、国家园林城市、国家森林城市，连续三年获评全省生态环境保护先进市，正在创建国家生态文明建设示范市。

全市森林覆盖率 50.25%，城乡绿化覆盖率 60.59%，水域占国土面积比重 9.6%，拥有各类自然保护地 13 个，国家 I 级 II 级重点保护野生动物 89 种、国家 I 级 II 级保护植物 77 种。2022 年已全面消除重污染天气，15 个国、省考考核断面水质优良率达 100%，成立了全省第一个、全国第二个森林碳汇管理局。

Meishan, located between Min River and Mount Emei, is surrounded by lush mountains and clear rivers. It is beautiful, eco-friendly and liveable. It is a national sanitation city, garden city, and forest city. It has been rated as a model for ecological and environmental protection in Sichuan province for three consecutive years. It is now building a national demonstration city for ecological civilization.

The city's forest coverage rate is 50.25%, the urban and rural green coverage rate is 60.59%, and water areas account for 9.6% of the total land. There are 13 various nature reserves, 89 wild animal species and 77 plant species under national level I and level II protection. By 2022, heavy polluted weather had been eliminated. The water quality in all 15 national and provincial assessed sections is rated as excellent. Meishan established Sichuan's first and China's second forest carbon sink management bureau.



全市森林覆盖率
Forest coverage rate:
50.25%

50.25%

城乡绿化覆盖率
Urban and rural greenery
coverage rate: 60.59%

60.59%

水域占国土面积比重
9.6% of the land surface
is water-covered

9.6%

作为养眼、养身、养心的“成都后花园”，拥有“人间天台、最美桌山”瓦屋山，“康养圣地、避霾天堂”峨眉半山七里坪，“川西第一海”黑龙滩，“长寿福地”彭祖山、“佛教入蜀第一山”老峨山、三苏故居三苏祠等风景名胜，成功入选“亚太地区（二三线城市）首选旅游目的地”“中国最美生态文化旅游城市”。

As the "garden of Chengdu", Meishan is a feast for the eyes and tonic for the body. It is home to Wawu Mountain, the most splendid table-mountain, Qiliping of Mid-Emei, a health sanctuary and smog-free paradise, Black Dragon Beach, the most alluring lake in Western Sichuan, Pengzu Mountain, land of longevity, and the Former Residence and Temple of Sansu. It has been named a top tourism destination in the Asia-Pacific region and China's Most Beautiful Eco-Cultural Tourism City.



各类自然保护地
13 nature reserves

13 个

国家 I 级 II 级重点保护野生动物
89 wild animals under national
Level I and Level II protection

89 种

国家 I 级 II 级保护植物
77 plants under national Level I
and Level II protection

77 种

15 个国、省考考核断面水质优良率达
The water quality in all 15 national
and provincial assessed sections is
rated as excellent

100%



黑龙滩
Black Dragon Beach



玉屏山
Yuping Mountain



七里坪
Qiliping



大熊猫国家森林公园
Giant Panda National Forest Park

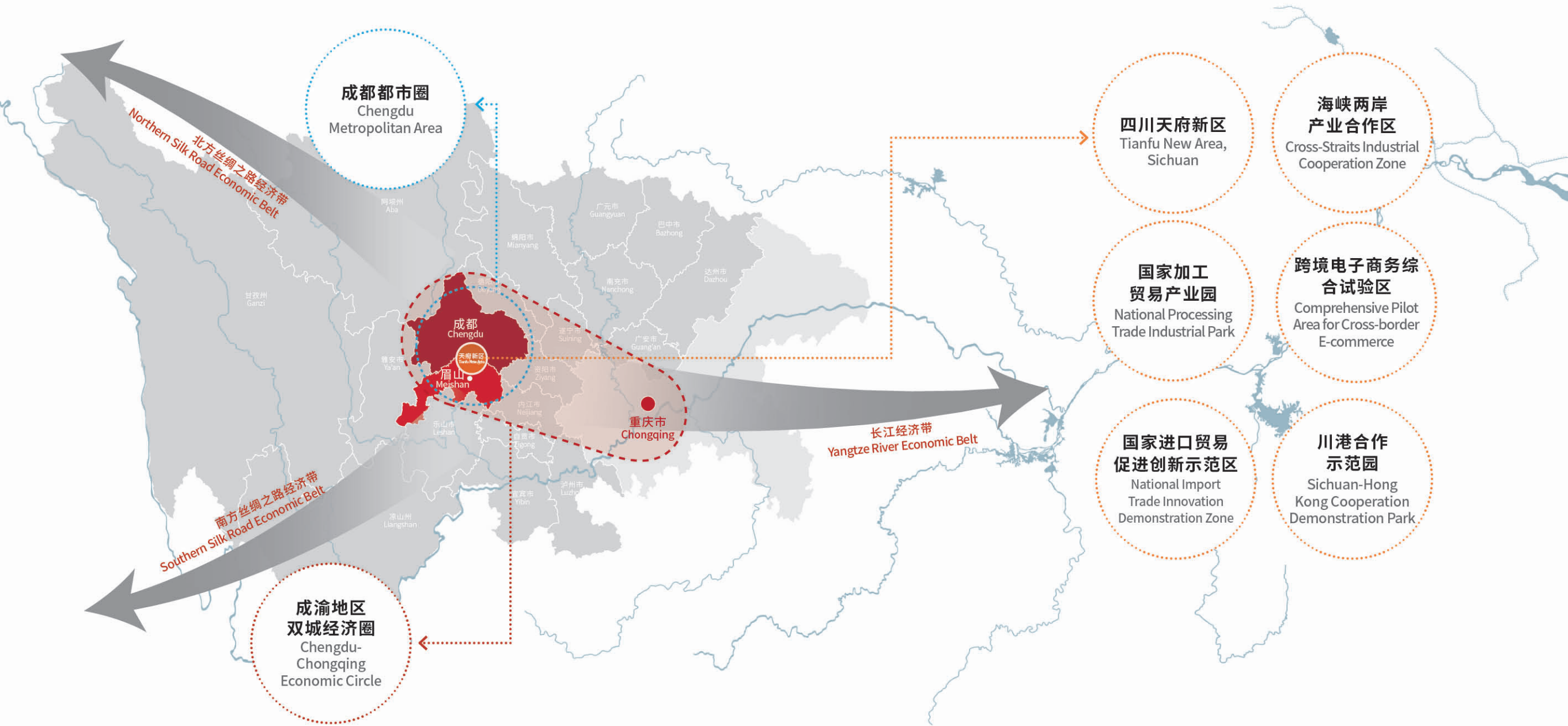


瓦屋山
Wawu Mountain



柳江古镇
Liujiang Ancient Town

机遇眉山 Opportunity in Meishan



成渝地区双城经济圈 Chengdu-Chongqing Economic Circle

2021年10月20日，中共中央、国务院印发《成渝地区双城经济圈建设规划纲要》，指出成渝地区双城经济圈在国家发展大局中具有独特而重要的战略地位。

《规划纲要》提出：“充分发挥成都带动作用，发挥德阳、眉山、资阳比较优势，加快生产力和生活圈的同城化布局，促进基础设施同网、公共服务资源共享、政务事项通办、开放门户共建，创建成德眉资同城化综合试验区，建设经济发达、生态优良、生活幸福的现代化都市圈。”“加快天府新区成都片区和眉山片区融合发展，打造成眉高新技术产业带”。

In October, 2021, the Central Committee of the Communist Party of China and the State Council issued the Outline of the Development Plan for the Chengdu-Chongqing Economic Circle, stressing the unique and important strategic position of the Circle in China's overall development.

According to the Development Plan, "The leading role of Chengdu and the comparative advantages of Deyang, Meishan and Ziyang should be leveraged to promote the integration of infrastructure, public services and government affairs and the in-sync construction of opening portals in Chengdu, Deyang, Meishan and Ziyang. Such synchronization should aim at building a modern metropolitan area with developed economy, excellent ecology and a happy life for the people." "The Chengdu and Meishan parts of the Tianfu New Area should be integrated as a high-tech belt."

成都都市圈 Chengdu Metropolitan Area

成都都市圈是继南京都市圈、福州都市圈之后，国家层面批复的第三个都市圈。四川省委把建强现代化成都都市圈，加快成德眉资同城化发展作为推动成渝地区双城经济圈建设的“先手棋”、支撑工程和实施“一干多支”战略部署的牵引性工程。

2021年11月29日，四川省人民政府正式印发《成都都市圈发展规划》，指出：“充分发挥成都辐射带动作用和德阳、眉山、资阳区位优势，推动一体化、同城化发展，全面推进基础设施互联互通、现代产业协作共兴、对外开放协同共进、公共服务便利共享、生态环境共保共治，打造有机融合的经济共同体，加快建设具有全国影响力的现代化都市圈”。

The Chengdu metropolitan area is the third metropolitan area approved at the national level after the Nanjing metropolitan area and the Fuzhou metropolitan area. The CPC Sichuan Provincial Committee attaches great importance to building a strong modern Chengdu metropolitan area and accelerating the integration of Chengdu, Deyang, Meishan and Ziyang. These are the first strategic steps to promote a booming Chengdu-Chongqing economic circle.

On November 29, 2021, the Sichuan Provincial People's Government officially issued the Chengdu Metropolitan Development Plan, stressing "the leading role of Chengdu and the locational advantages of Deyang, Meishan and Ziyang." It was pointed out that "the integrated Metropolitan area should prioritize the interconnectivity of infrastructure and industry, creating a prosperous economic community through open, coordinated development, and co-governance of public services and ecological environment. It will be an organic and integrated economic community, and a modern metropolitan area with national influence."

成眉同城化发展

Chengdu-Meishan Synergized Development

眉山是距离成都最近的地级市。成都南拓，一马平川、交通便利、风景秀丽、宜业宜居，眉山发展优势尽显、其势已成，成眉同城化最有基础、最有条件。

眉山历届党委政府始终坚持融入成都，经过 20 多年的不懈努力，已在成德眉资同城化发展中抢得先机、赢得主动。

The closest prefecture-level city to Chengdu, Meishan enjoys strong advantages and momentum due to the southward development of Chengdu and its own convenient transportation, beautiful scenery, and inviting business environment. All conditions are ripe for the synergized development of Chengdu and Meishan.

The previous party committees and governments have always insisted on integrating Meishan into Chengdu. After more than 20 years of unremitting efforts, they have been taking the initiative in the development of Chengdu-Deyang-Meishan-Ziyang Metropolitan Area.

眉山东部新城
New Town of Eastern Meishan

规划同城 Synchronized planning

成眉协同编制《成都都市圈发展规划》《成都都市圈国土空间规划》等重要规划，共建成眉“产业协作圈、开放合作圈、宜居生活圈”。

Chengdu and Meishan collaborated in the compilation of important plans such as the Chengdu Metropolitan Area Development Plan and the Chengdu Metropolitan Area Land and Space Plan, jointly building an area for industrial collaboration, open business, and pleasant life.

成眉共享国家级天府新区金字招牌。

Chengdu and Meishan shared the golden signboard of the national Tianfu New Area.

成眉交界地带融合发展不断加速，视高新城形象初显，眉东新城全域纳入成德眉资同城化综合试验区。

The integrated development of the Chengdu-Meishan junction area is accelerating with the Shigao New Town beginning to emerge. The New Town of Eastern Meishan is now fully incorporated in the Chengdu Metropolitan Area.

产业同城 Synchronized industries

成眉同城化重大项目累计投资超 500 亿元。

The cumulative major-project investment in the Chengdu-Meishan Metropolitan Area has exceeded 50 billion yuan.

成眉高新技术产业带加快建设，高新技术产业营收突破 660 亿元。

The development of the Chengdu-Meishan high-tech industrial belt is speeding up, with the revenues of high-tech industries exceeding 66 billion yuan.

“成都研发 + 眉山制造”协同效应凸显，累计合作制造业项目 130 余个，总投资超 800 亿元，两地产业配套企业超 400 户。

The synergistic effect of Chengdu's R&D + Meishan's Manufacturing is prominent. More than 130 cooperative manufacturing projects have drawn a total investment of more than 80 billion yuan, giving rise to 400+ related companies in the two cities.

成眉不断深化国际铁路港协作，持续做强都市圈物流能级。

Chengdu and Meishan are deepening cooperation on the international railway port for stronger logistics capacity.

成眉联合推出 11 条精品旅游线路，共促都市圈文旅融合发展。

Chengdu and Meishan have jointly launched 11 high-quality tourism routes to promote the integrated development of culture and tourism in the metropolitan area.

交通同城 Synchronized transportation

成眉同城路网初步形成“5高2轨13快”20条大通道，两市实现轨道半小时、公路一小时通勤，正加快构建“7高8轨16快”立体交通格局。

There are 20 urban roads, i.e. 5 expressways, 2 railways and 13 highways, in the Chengdu-Meishan Metropolitan Area. The commute between the two cities takes half an hour by rail and one hour by road. It is moving toward a three-dimensional transportation network of 7 expressways, 8 railways and 16 highways.

成眉市域铁路S5线、天眉乐高速2022年9月开工建设，成都外环铁路成功获批。

The S5 line of the Chengdu-Meishan Railway and the Tian-Mei-Le Expressway started construction in September 2022, and the Chengdu Outer Ring Railway has been successfully approved.

成眉200多公里市界线上，平均每20公里1条干线公路，每40公里1条高速公路。

Chengdu and Meishan has a 200-kilometer long boundary. There is, on average, a trunk road every 20 kilometers and an expressway every 40 kilometers.

成眉日间动车基本实现“公交化”运营，日开行动车超100列。

Between Chengdu and Meishan, more than 100 trains are run daily, with a schedule similar to those of buses.

稳定开行5条跨市公交线路，日均乘客超万人，实现公交“一卡通刷、一码通乘”。

5 cross-city bus lines are operated, with over 10,000 passengers daily. All public transportation is accessible by one-card swiping or one-code scanning.

公共服务同城 Synchronized government services

社保无障碍转移、医学检查报告互认、公积金贷款异地使用等160多个政务服务事项“同城化无差别”受理。

More than 160 government services are mutually recognized, including the transfer of social insurance payment, the acceptance of medical reports, and the access of provident funds.

四川大学眉山校区2022年正式启动建设，眉山成为川内第二个拥有985高校的地级市。

The Meishan Campus of Sichuan University started construction in 2022, and Meishan will become the second prefecture-level city in Sichuan with a "Project 985" university.

50余所中小学（幼儿园）结对发展。

50 kindergartens, primary and secondary schools are pairing up with counterparts in Chengdu.

华西医院眉山医院、华西二院眉山市妇女儿童医院、华西二院天府医院·四川省儿童医院、成都中医药大学附属眉山医院相继挂牌接诊，全省首个国家区域医疗中心落户眉山。

West China Hospital, West China Women and Children's Hospital, Tianfu Hospital of West China Women and Children's Hospital, Sichuan Provincial Children's Hospital, and Chengdu University of Traditional Chinese Medicine have all launched their affiliated or branch hospital in Meishan. The first regional healthcare center in Sichuan province has opened in Meishan.

共建“天府粮仓”示范区，持续深化“米袋子”“肉担子”“菜篮子”“果盘子”保供合作。

The two cities are jointly building the Tianfu Granary demonstration area, and cooperate on the production of rice, meat, vegetables and fruits.



天府大道眉山段
Meishan Section of Tianfu Avenue

四川天府新区

Tianfu New Area, Sichuan

2014年10月，四川天府新区正式获批国家级新区，眉山有94平方公里进入核心区，448平方公里成为协调管控区。眉山正围绕“天府公园城、眉山创新谷、开放新高地”定位，高标准建设眉山天府新区。

In October 2014, Tianfu New Area, Sichuan was officially approved as a national-level new area. 94 square kilometers of Meishan was included in the core area, and 448 square kilometers came under coordinated control. Meishan focuses on building the Tianfu Park City, Meishan Innovation Valley, and being a new leader in opening. It is building the Meishan part of the Tianfu New Area with high standards.

天府公园城

Tianfu Park City

眉山创新谷

Meishan Innovation Valley

开放新高地

A New Leader in Opening

眉山天府新区
Tianfu New Area (Meishan)

海峡两岸产业合作区

Cross-Straits Industrial Cooperation Zone

2017年12月，国务院台办、国家发展和改革委员会、商务部共同批准设立“海峡两岸产业合作区”。海峡两岸产业合作区眉山产业园将通过两岸产业深度对接，在产业集聚发展、创新平台建设、合作水准提升等方面实现新突破，为台资企业在中西部地区发展搭建新平台。

In December 2017, the Cross-Straits Industrial Cooperation Zone was launched with the joint approval of the Taiwan Affairs Office of the State Council, the National Development and Reform Commission, and the Ministry of Commerce. Working closely with the business community across the Taiwan Strait, the Meishan Industrial Park of the Cross-Straits Industrial Cooperation Zone provides a new platform to serve Taiwan businesses in the central and western China through its industrial clusters, innovative platforms and complementary collaborations.

国家加工贸易产业园

National Processing Trade Industrial Park

2021年9月，眉山加工贸易产业园入选首批国家加工贸易产业园，全国共13家，四川仅眉山获批。产业园将依托生产要素成本优势和政策支持，承接东部沿海加工贸易产业转移，集群引进上下游产业，推动加工贸易创新发展。

In September 2021, the Meishan Processing Trade Park was selected as one of the thirteen national processing trade parks, and Meishan was the only one approved in Sichuan. With the cost advantages and policy support, the park hosts the processing trade industries relocated from the eastern seaboard and promoted the innovative development of processing trade by connecting upstream and downstream industries and clusters.



跨境电子商务综合试验区

Comprehensive Pilot Area for Cross-border E-commerce

2022年2月8日，国务院正式发文同意设立中国（眉山）跨境电子商务综合试验区。综合试验区具有无票免税、所得税核定征收、通关便利、放宽进口监管、减免增值税、实施《跨境电商标准框架》等政策优势。眉山将重点依托成都、重庆两个消费中心城市，打造面向西南的跨境电商进口产品集散地；依托眉山国际铁路港，打造背靠西南的特色产品出口集聚地。

On February 8, 2022, the State Council approved the establishment of China (Meishan) Comprehensive Pilot Zone for Cross-Border E-Commerce. The pilot offers policy advantages such as no-invoice tax exemption, reduced income tax, convenient customs clearance, relaxation of import supervision, and reduction or exemption of value-added tax. The Cross-Border E-commerce Standard Framework is implemented here. Relying on the two consumer cities of Chengdu and Chongqing, Meishan will build a cross-border e-commerce distribution center for imported products. Through the Meishan International Railway Port, it will distribute specialty products to southwestern China.

国家进口贸易促进创新示范区

National Import Trade Innovation Demonstration Zone

2021年11月，经商务部等九部委批准，在全国设立10个进口贸易促进示范区，四川天府新区进口贸易促进创新示范区成功获批，眉山天府新区是示范区重要组成部分。眉山将充分发挥示范区促进进口、服务产业、提升消费、示范引领的作用，推动示范区进口规模稳步扩大，结构不断优化，带动相关产业提质增效。

In November 2021, with the approval of nine ministries and commissions that include the Ministry of Commerce, ten import promotion zones were set up in China. Meishan plays an important part in the Sichuan Trade Promotion Zone. Meishan has leveraged the demonstration zone in promoting imports, serving industries, and enhancing consumption. The demonstration zone has seen steady expansion of imports, optimization of import structure, and the improvement of quality and efficiency in related industries.

川港合作示范园

Sichuan-Hong Kong Cooperation Demonstration Park

川港合作示范园是四川省商务厅认定的国际（地区）合作园区，旨在打造“一带一路”沿线国家和地区科技创新合作的示范基地，建成港澳向内地拓展、内地借助港澳通达国际市场的双向通道和重要平台。

The Sichuan-Hong Kong Cooperation Demonstration Park was an international (regional) cooperation park identified by the Department of Commerce of Sichuan Province. It is a base for scientific and technological cooperation among countries and regions along the Belt and Road, and an important platform for Hong Kong and Macao to expand to the mainland and for the mainland to access the international market with through Hong Kong and Macao.



PART 2



产业发展 Industrial Development

眉山坚定以“双碳”战略为引领，推进制造业强市，加快绿色低碳高质量发展，突出发展新能源新材料，重点发展电子信息、机械及高端装备制造、生物医药，协同发展其他产业，形成以“1+3”为主导的现代工业体系。同时，全力提速服务业发展，加快构建现代服务业体系。

Meishan is firmly guided by the carbon peak and carbon-neutral strategies in promoting its manufacturing industry. It is accelerating green, low-carbon and high-quality development, highlighting alternative energy and new materials. It focuses on the development of electronic information, machinery and advanced equipment manufacturing, biomedicine, and coordinates the development of other industries, forming a modern industrial system of "1+3". At the same time, it is spurring the development of the service industry and accelerating a "3+5" modern service industry system.

眉山高新区
Meishan High-Tech Zone

“1+3”现代工业体系 The “1+3” modern industrial system

突出发展 Outstanding development

新能源新材料 Alternative Energy and New Materials

建设全球新能源新材料制造基地
A global manufacturing base for alternative energy and new material

重点发展 Development priorities

电子信息 Electronics & Information

建设成渝地区电子信息重点配套基地
A key supporting base of electronic information in Chengdu-Chongqing area

机械及高端装备制造 Machinery and advanced equipment manufacturing

建设全国“专精特新”装备制造基地
A national manufacturing base for advanced and specialized equipment

生物医药 Biomedicine

建设西南生物医药重要研发生产基地
An important R&D and production base for biomedicine in Southwest China

现代服务业 Modern service industry

打造全省服务业高质量发展示范区
A demonstration zone for the high-quality development of the service industry in Sichuan province

高标准发展生产性服务业
High-standard development of production services

高品质发展生活性服务业
High-quality development of life services

主导产业

Leading Industries

新能源新材料

建设全球新能源新材料制造基地

Alternative Energy and New Materials

A global manufacturing base for alternative energy and new material

产业现状

Industry status

新能源新材料是全市首个千亿产业，现有规模以上企业 200 余家。形成了以中创新航、美国雅保、杉杉科技、协鑫集团、胜华新材、天华超净等为代表的锂电产业集群，以通威太阳能、三五互联、江苏美科为代表的晶硅光伏产业集群，以万华化学、金象赛瑞、陶氏化学、中科兴业为代表的化工新材料产业集群。已建成全球单体车间建筑面积最大、产能规模最大的光伏电池车间，全球最大的三聚氰胺生产基地，省内最集中的铝合金生产基地，正在加快打造成全国知名的锂电材料产业集群、成眉乐光伏产业带核心区、全省一流的化工新材料产业基地、具有全球影响力的新能源专用化学品生产基地。



规上企业
More than 200
enterprises above
the designated scale

200 余家



产业产值
Industrial output
value: 100 billion

1000 亿

The industry of alternative energy and new materials is Meishan's first 100-billion-yuan industry. More than 200 large enterprises are forming the economy of scale. These include a lithium battery industry cluster represented by CALB, Albemarle, Shanshan Technology, GCL, Shingwa Advanced, and Suzhou TA&A Ultra Clean Technology, a crystalline silicon photovoltaic cluster represented by Tongwei Solar, 35.com Technology and Jiangsu Meike Solar and a chemical material cluster represented by Wanhua Chemical, Golden Elephant Sincerity, Dow Chemical, and Zhongke Technology. It has built the world's largest single photovoltaic cell workshop, the world's largest melamine production base, and Sichuan's most concentrated aluminium alloy production base. It is accelerating the development of China's photovoltaic industry belt, Sichuan's top chemical material industry base, and the global production base of specialty chemicals for renewable energy.

发展方向

Direction of development

打造成渝地区新能源新材料制造基地。锂电产业促进基础锂盐、正负极材料、电解液等锂电材料产业提档升级，重点发展动力电池、储能电池、钠电池相关产业，突破发展动力电池装备、消费电池装备、新能源汽车等产业，形成“基础锂盐加工—关键材料生产—电池生产—电池回收”及锂电下游应用的锂电全产业链。晶硅光伏产业重点发展单晶硅片、高效晶硅电池、薄膜电池、光伏组件、光伏辅材，突破发展光伏零部件及装备、光储充一体化等光伏应用产品。化工新材料产业重点发展生物降解材料、三聚氰胺特色材料及电子化学品，突破发展石墨烯、碳纳米管、富勒烯等先进碳材料。加快创建新能源新材料产业研发中心、创新中心等科技创新平台。探索发展氢能相关产业。

It is creating an alternative energy and new material manufacturing base in Chengdu and Chongqing. The lithium battery industry is upgrading the materials such as basic lithium salts, positive and negative

electrode materials, and electrolytes. It is focusing on the development of power batteries, energy storage batteries, and sodium battery-related industries. It is making breakthroughs in the development of power battery equipment, consumer battery equipment, and alternative energy vehicles. It is forming a lithium battery industry chain that consists of basic lithium salt processing, key material production, battery production and battery recycling and the downstream applications of lithium batteries. The crystalline silicon photovoltaic cluster focuses on the development of monocrystalline silicon wafers, high-efficiency crystalline silicon cells, thin-film cells, photovoltaic modules, and photovoltaic auxiliary materials. It is making breakthroughs in the development of photovoltaic components and equipment, and applications such as integration of photovoltaic storage and charging. The chemical material cluster focuses on the development of biodegradable materials, melamine materials and electronic chemicals. It is making breakthroughs in the development of advanced carbon materials such as graphene, carbon nanotubes, and fullerenes. It is building scientific and technological innovation platforms such as R & D and innovation centers for alternative energy and new materials. It is exploring industries related to hydrogen energy.



电子信息

建设成渝地区电子信息重点配套基地

Electronics & Information

A key supporting base of electronic information in Chengdu-Chongqing area

产业现状

Industry status

眉山是四川省规划的“成—绵—眉—乐”电子信息产业带、“成德绵眉泸雅”大数据产业集聚区的重要组成部分。围绕构建“屏芯端数智材”，引进建区设市以来第一个总投资超 400 亿元的制造业项目——信利高端显示，并陆续引进 31 个总投资超 700 亿元的电子信息项目，初步形成以信利集团、天府江东、华赐半导体、博雅新材料、晶瑞电子、江化微电子等龙头企业为引领，以新型显示、集成电路、存储、智能终端、大数据为主导的电子信息产业体系。已建成全国最大中小尺寸新型显示生产基地、西南最大微电子材料聚集区，成为四川存储元器件和存储网络核心区，正打造四川省万亿电子信息产业核心联动区。

Meishan is an important part of the Chengdu-Mianyang-Meishan-Leshan electronic information industry belt planned by Sichuan Province and the Chengdu-Deyang-Mianyang-Meishan-Luzhou-Ya'an big data industry cluster. It is focusing on the development of screens, chips, terminals and smart digital materials. CEEDI was the largest manufacturing project established in Meishan with a total investment of more than 40 billion yuan. After that, 31 electronic information projects with a total investment of more than 70 billion yuan was set up in Meishan. Propelled by industry leaders such as CEEDI, Tianfu Jiangdong, Huaci Semiconductor, Boya Advanced Materials, Crystal Clear Electronic, and Jiangyin Jianghua Microelectronics, an electronic industry emerges with a focus on new displays, integrated circuits, storage, smart terminals, and big data. It has built the largest small and medium-sized display production base in China, and the largest microelectronic material cluster in Southwest China. It has become the core area of storage components and storage networks in Sichuan. It is also building a core linkage area of Sichuan's trillion-dollar electronic information industry.



发展方向

Direction of development

打造成渝地区电子信息重点配套基地。依托眉山天府新区、眉山高新区、彭山经开区、仁寿经开区、洪雅经开区，重点发展新型显示、集成电路、存储、智能终端等产业。以强链为重点提升显示材料多元化、面板多品类供应功能，扩充半导体材料和器件品类，引进智能终端整机及核心零部件企业，做强数据服务、数据应用领域。健全全国最大中小尺寸新型显示生产基地、西南最大微电子材料聚集区，壮大四川存储元器件、存储网络核心区，打造四川省万亿电子信息产业核心联动区。

It is creating a key supporting base for electronic information in the Chengdu-Chongqing area. Relying on the Meishan part of Tianfu New Area, Meishan High-tech Zone, Pengshan Economic Development Zone, Renshou Economic Development Zone, and Hongya Economic Development Zone, it focuses on the development of new displays, integrated circuits, storage, intelligent terminal and other industries. It is strengthening the industrial chain to diversify display materials and the supply multi-functional panels, expanding the categories of semiconductor materials and devices. It attracts companies that make smart terminals and core components. It is also strengthening data services and data applications. As China's largest production base for small and medium-sized displays, and the largest microelectronic material manufacturer in Southwest China, it is expanding storage components and networks in Sichuan, and creating a core linkage for Sichuan's trillion-dollar electronic information industry.



机械及高端装备制造

建设全国“专精特新”装备制造基地

Machinery and Advanced Equipment Manufacturing

A national manufacturing base for advanced and specialized equipment

产业现状

Industry status

全市现有机械及高端装备制造规上企业 120 余家，形成了涉及金属表面处理—模具—铸件加工—精密传动件—智能电机—数控机床及机器人等较为完善的产业链条。已建成全球最大的标准传动件生产基地、全国最大的紧固件生产基地、全国最大的小型压缩机生产基地、全国最大的实木加工机床生产基地、国内轨道交通设备生产重要基地。本土培育了中车眉山车辆公司、德恩精工、丹齿精工、四川丹甫、青城机械、德鑫航空等一批行业知名企业，引进了格力电工、富生电器、诺尔电气、新筑智能、倍特电动车等一批国内知名企业。

The city has more than 120 machinery and advanced equipment manufacturing enterprises, forming a relatively complete industrial chain involving metal surface treatment-mold-casting processing-precision transmission parts-intelligent motors-NC machine tools and robots. The world's largest standard transmission parts production base, the country's largest fastener production base, the country's largest small compressor production base, the country's largest solid wood processing machine tool production base, and an important domestic rail transit equipment production base have been built. Locally cultivated a number of well-known enterprises in the industry, such as CRRC Meishan Vehicle Company, Deen Seiko, Danchi Seiko, Sichuan Danfu, Qingcheng Machinery, Dexin Aviation, etc., and introduced Gree Electric, Fusheng Electric, Nuor Electric, Xinzhu Intelligent, A group of well-known domestic enterprises such as Beite Electric Vehicle.

发展方向

Direction of development

打造全国专精特新装备制造基地。依托眉山天府新区、甘眉工业园区南区、丹棱经开区、青神经开区，聚焦轨道交通、成套设备、关键零部件等领域，培育一批专注细分市场、创新能力强、市场占有率高、掌握关键核心技术的装备制造企业。

It is creating a national manufacturing base for advanced and specialized equipment. Relying on the Meishan part of Tianfu New Area, Ganzi-Meishan Industrial Park-South Area, Danling Economic Development Zone, and Qingshen Development Zone, it focuses on rail transit, complete sets of equipment, and key components, cultivating equipment manufacturing enterprises with high efficiency, mastery of key core technologies and niche segments, innovation capabilities, and market share.



德恩精工
Sichuan Dawn Precision



格力电工
Gree Electric



中车眉山车辆公司
CRRC Meishan Vehicle Company

生物医药

建设西南生物医药重要研发生产基地

Biomedicine

An important R&D and production base for biomedicine in Southwest China

产业现状

Industry status

全市现有生物医药规上企业 30 余家，形成了以亿帆医药、国为制药、科伦药业、海思科药业、历瑞医药为龙头的化学制药产业集群，以森科制药、彩虹制药、瓦屋山药业为龙头的现代中药产业集群，以舒泰神、大熊生物、龙麟福生、汇宇生物为龙头的生物制药产业集群，以三鑫医疗、四川双陆、西安点云为龙头的医药器械产业集群。眉山经开新区（西部药谷）已成为西部规模最大、专业化程度最高的生物医药产业园区之一，是商务部在全国重点支持的 3 个医药园区之一、四川省首批药品上市许可持有人制度试点园区。拥有国家一类新药 4 个、二类新药 3 个、三类新药 4 个、全国独家产品 24 个，川泽泻占全国市场 70%，雅连被列入中国国家地理标志产品，建成了全国第二所、西部地区第一所以“药科”命名的全日制普通高等学校。

There are more than 30 biopharmaceutical companies in Meishan, forming a chemical pharmaceutical cluster led by Yifan Pharmaceutical, Guowei Pharmaceutical, Kelun Pharmaceutical, Haisco Pharmaceutical, and Lirui Pharmaceutical, a modern Chinese medicine cluster led by Sichuan Senke Pharmaceuticals, Caihong Pharmaceuticals and Wawushan pharmaceuticals, a biopharma cluster led by Staidson, Daxiong Bio, Lomon Bio and Huiyu Biotgech, a medical device cluster led by Sanxin Medical, Sichuan Shuanglu, and Particle Cloud. Meishan Economic and Technological Development Zone (West China Pharma Valley) is the largest and most specialized biopharmaceutical park in West China. It is one of the pilot parks supported by the Ministry of Commerce for the drug marketing license holder system in Sichuan Province. It holds patents for 4 Class-I drugs, 3 Class-II drugs, 4 Class-III drugs, and 24 exclusive products. It accounts for 70% of the Chinese Alisma market. Coptis deltoidea C. Y. Cheng & Hsiao is included in China's national geographical indication products. It has built China's first and West China's second university named with the pharmaceutical science.



发展方向

Direction of development

打造西南生物医药重要研发生产基地。依托眉山经开新区（西部药谷），聚力招引培育龙头企业，重点发展化学药、现代中药、生物制品等产业；依托药效评价中心等研发平台，推动化学药“仿创”结合、中药新品开发、生物制品技术突破、医疗器械高端化。

It is building an important R&D and production base for biomedicine in Southwest China. Relying on the Meishan Economic and Technological Development Zone (West China Pharma Valley), it focuses on attracting and cultivating leading enterprises in chemical medicine, modern Chinese medicine, biological products and other industries. It promotes new product development, technological breakthroughs in biological products, and advanced medical devices.



现代服务业

打造全省服务业高质量发展示范区

Modern Services Industry

Create a demonstration zone for the high-quality development of the province's service industry

产业现状

Industry status

全市现代服务业产业体系正加快构建。科技服务创新发展，建成全国唯一的中国泡菜产业技术研究院，国家和省级工程实验室4个，国家博士后科研工作站1家。华为大数据产业园、猪八戒数字经济科创产业园、德恩精工工业互联网平台等示范项目高效运行，德国SAP数字化赋能中心、浪潮新基建物联感知实验室等优质项目加快推进。物流服务提档升级，眉山国际铁路港已开行北向欧洲、南向东南亚国际班列线路，全市快递业务量、冷链静态库容量居四川第2，丰树、普洛斯、苏宁等知名物流企业相继入驻。商贸服务持续繁荣，成功获批国家跨境电商综试区，拥有国家级电子商务进农村综合示范县4个，“东坡美食”享誉国内外，东坡水街晋升全国“网红打卡地”。

The development of Meishan's modern service industry system is accelerating. The scientific and technological services are advancing in an innovative manner, with the establishment of the only Chinese pickle industry technology research institute, 4 national and provincial engineering laboratories, and 1 national post-doctoral research center. Demonstration projects are running efficiently, including Huawei Big Data Industrial Park, Zhubajie Digital Economy Science and Technology Innovation Industrial Park, and Deen Seiko Industrial Internet Platform. High-quality projects are accelerating, including the German SAP Digital Empowerment Center and the Inspur New Infrastructure IoT Perception Laboratory. The logistics service has been upgraded. Meishan International Railway Port has launched international train lines to Europe and to Southeast Asia. The express delivery business volume and cold chain static storage capacity ranked second in Sichuan. Well-known logistics companies such as Mapletree, ProLogis, and Suning have successively moved in. Business services continue to prosper, with the city approved as a national cross-border e-commerce comprehensive pilot area, and 4 counties recognized as national-level comprehensive demonstration for rural e-commerce.



发展方向

Direction of development

打造全省服务业高质量发展示范区。着力引进一批服务业区域功能性总部经济项目，逐步放大总部经济集聚效应。高标准发展生产性服务业，发挥“1+3”先进制造业产业优势，全力招引一批研发设计、高端物流、平台运营等服务业补链项目，推进产业融合增效。高品质发展生活性服务业，依托城市新中心等载体建设，引入区域专业性市场、商业综合体、大型生活消费设施等服务业项目，做强城市核心支撑。

Meishan aims to build a demonstration zone for the high-quality development of Sichuan province's service industry. Efforts are made to introduce regional headquarters of the service industry, and produce an agglomeration effect of the headquarters economy. It is developing the production service industry with high standards, leveraging the advantages of the "1+3" advanced manufacturing industry, and attracting supplementary projects such as R&D and design services, high-end logistics, and platform operations while promoting industrial integration and efficiency. It is also developing high-quality development of life service industry by relying on the construction of new urban centers, introducing regional markets, commercial complexes, large-scale consumption facilities and other services, and strengthening the core support of the city.



现代农业 Modern Agriculture

产业现状 Industry status

全市基本形成以泡菜、畜产品、调味品、乳制品等为主导，较为完善的农产品加工业体系。2022年，“味在眉山”销售收入突破1200亿元。培育国家级重点龙头企业6家，创成中国特色农副产品之乡13个、中国驰名商标7个。建成全国最大的泡菜产业集群，泡菜产业创造“六个全国第一”，年销售收入占全国三分之一、全省二分之一。建成全国最大的晚熟柑橘产业集群，晚熟柑橘产业在全国首批50个产业集群两年建设中期绩效考核中位列第2。竹产业综合产值突破100亿元。培育和引进了千禾味业、幺麻子、漫味龙厨、味聚特、吉香居、李记酱菜、海霸王、思念食品、蒙牛、新希望、今麦郎、五谷源、德康通内斯、泰国正大、金锣、王家渡、环龙科技、竹元科技等知名企业。

Meishan has formed a relatively complete agricultural product processing system dominated by kimchi, livestock products, condiments, and dairy products. In 2022, the sales revenue of "Taste in Meishan" will exceed 120 billion yuan. It has cultivated or drawn well-known enterprises such as Qianhe Condiment and Food, Yaomazi, Manwei Longchu, Weijute, Jixiangju, Liji Pickles, Haibawang, Synear Food, Mengniu, New Hope, Jinmailang, Wuguyuan, Dekang Tönnies, Chia Tai Group, Jinluo Food, and Wangjiadu, Huanlong Technology and Zhuyuan Technology.



“味在眉山”销售收入
"Taste in Meishan" sales
revenue: 120 billion yuan

1200 亿元

国家级重点龙头企业
6 national key leading
enterprises

6 家



发展方向 Direction of development

眉山正紧扣都市现代农业发展目标，以“天府粮仓”建设为突破，加快完善现代化农业产业体系、生产体系、经营体系，持续擦亮眉山农业金字招牌。培育壮大“2+3+N”产业体系，做强做优粮油、生猪2大战略产业和东坡泡菜、眉山春橘、眉山竹业3大特色产业，建设国家优质粮油保障基地、国家重要的生猪生产基地、全球泡（榨）菜出口基地、国家晚熟柑橘优势特色产业集群、美丽竹林风景线。延长农业产业链条，发展现代农产品加工、现代农业种业、现代农业装备、现代农业烘干冷链物流。深入挖掘乡土文化，积极发展乡村旅游、康养、研学等“农业+”新业态。

Meishan is following the development trends of urban modern agriculture, focusing on building the "Tianfu Granary", improving the production and management of the modern agricultural industrial system, and continuing to develop the golden brand of Meishan agriculture. It is expanding the "2+3+N" industrial system, optimizing the two strategic industries of grain/oil and swines, and the three characteristic industries of pickles, spring oranges, and bamboo. It is building a national high-quality grain and oil base and a swine production base, a global export base for pickled vegetables, a characteristic industrial cluster of late-ripening citrus, and a beautiful scenic spot featuring bamboo forests. It is extending the agricultural industry chain, developing modern agricultural product processing, seeding, agricultural equipment, and the drying and cold chain logistics. Innovative "agriculture+" business models include rural tourism, life and health preservation, and cultural research.





PART 3



投资载体 Investment Vehicles



眉山城市新中心
Meishan City's New Center

国家级、省级产业园区

National and provincial industrial parks

四川天府新区眉山片区 Meishan Part, Tianfu New Area, Sichuan

中部：新能源新材料、数字经济、总部经济
西部：高端装备制造、先进材料、保税物流
东部：智能制造、电子信息、数字经济

Center: Alternative energy and new materials, digital economy, and headquarters economy
West: Advanced equipment manufacturing, advanced materials, and bonded logistics
East: Intelligent manufacturing, electronic information, and digital economy

地址：四川天府新区眉山片区视高街道中建大道1号
电话：028-36068055
Address: No. 1, Zhongjian Avenue, Shigao Street, Meishan Part, Tianfu New Area, Sichuan
Tel: 028-36068055

海峡两岸产业合作区眉山产业园 Meishan Industrial Park, Cross-strait Industrial Cooperation Zone

机械制造业、电子信息产业和现代商贸物流业等
Machinery manufacturing, electronic information industry and modern trade and logistics industry.

地址：四川天府新区眉山片区青龙镇
电话：028-37696111
Address: Qinglong Town, Meishan Part, Tianfu New Area, Sichuan
Tel: 028-37696111

眉山高新技术产业园区（省级化工园区） Meishan High-tech Industrial Park (Sichuan Provincial Chemical Industry Park)

新能源新材料、农产品及食品加工（泡菜食品及配套）、生物医药产业
Alternative energy and new materials, agricultural products and food processing (kimchi and accessories), biomedicine industry

地址：眉山市东坡区尚义镇象耳社区金象大道4号
电话：028-38182253
Address: No. 4, Jinxiang Avenue, Xianger Community, Shangyi Town, Dongpo District, Meishan City
Tel: 028-38182253

眉山经开区新区 New Area of Meishan Economic and Technological Development Zone

生物医药、医疗器械、医药物流等大健康产业
Biomedicine, medical devices, pharma and other health industries

地址：眉山市东坡区眉州大道西六段8号
电话：028-38051999
Address: No. 8, West Sixth Section, Meizhou Avenue, Dongpo District, Meishan City
Tel: 028-38051999

眉山“中国泡菜城” “Chinese Kimchi City” of Meishan

农产品及食品加工（泡菜食品及配套）
Agricultural products and food processing (kimchi and accessories)

地址：眉山市东坡区顺江大道北一段1号
电话：(028)38601996
Address: No. 1, North Section 1, Shunjiang Avenue, Dongpo District, Meishan City
Tel: (028)38601996

岷东新区 Mindong New District

度假旅游、医疗康养、文化创意、高端教育和数字经济产业
Holiday tourism, health and life care, cultural creativity, educational services and digital economy industries

地址：眉山市东坡区岷东大道南段1号
电话：028-38016932
Address: No. 1, South Section of Mindong Avenue, Dongpo District, Meishan City
Tel: 028-38016932

甘孜-眉山工业园区（省级化工园区） Ganzhi-Meishan Industrial Park (Sichuan Provincial Chemical Industry Park)

新能源新材料、有色金属精深加工、机械及高端装备制造产业
Alternative energy and new materials, deep processing of non-ferrous metals, machinery and advanced equipment manufacturing

地址：眉山市修文镇进修路8号
电话：028-38569766
Address: No. 8, Jinxiu Road, Xiuwen Town, Meishan City
Tel: 028-38569766

四川彭山经济开发区（省级化工园区） Sichuan Pengshan Economic Development Zone (Sichuan Provincial Chemical Industry Park)

新能源新材料、机械及高端装备制造产业
Alternative energy and new materials, machinery and advanced equipment manufacturing

地址：眉山市彭山产业新城服务中心
电话：028-37636777
Address: Service Center of Pengshan Industrial New City, Meishan City
Tel: 028-37636777

四川仁寿经济开发区 Sichuan Renshou Economic Development Zone

电子信息、新型建材产业
Electronic information and new building materials

地址：眉山市仁寿县文林工业园区管委会
电话：028-36235000
Address: Management Committee of Wenlin Industrial Park, Renshou County, Meishan City
Tel: 028-36235000

四川洪雅经济开发区 Sichuan Hongya Economic Development Zone

电子信息、农产品及食品加工产业
Electronic information, agricultural products and food processing

地址：眉山市洪雅县将军乡胜利路二段
电话：028-35079816
Address: Section 2, Shengke Road, Jiangjun Township, Hongya County, Meishan City
Tel: 028-35079816

四川丹棱经济开发区 Sichuan Danling Economic Development Zone

机械及高端装备制造、农产品及食品加工产业
Machinery and advanced equipment manufacturing, agricultural products and food processing

地址：眉山市丹棱县齐乐镇机械西路188号
电话：028-37202356
Address: No. 188, Jiji West Road, Qile Town, Danling County, Meishan City
Tel: 028-37202356

四川青神经济开发区 Sichuan Qingshen Economic Development Zone

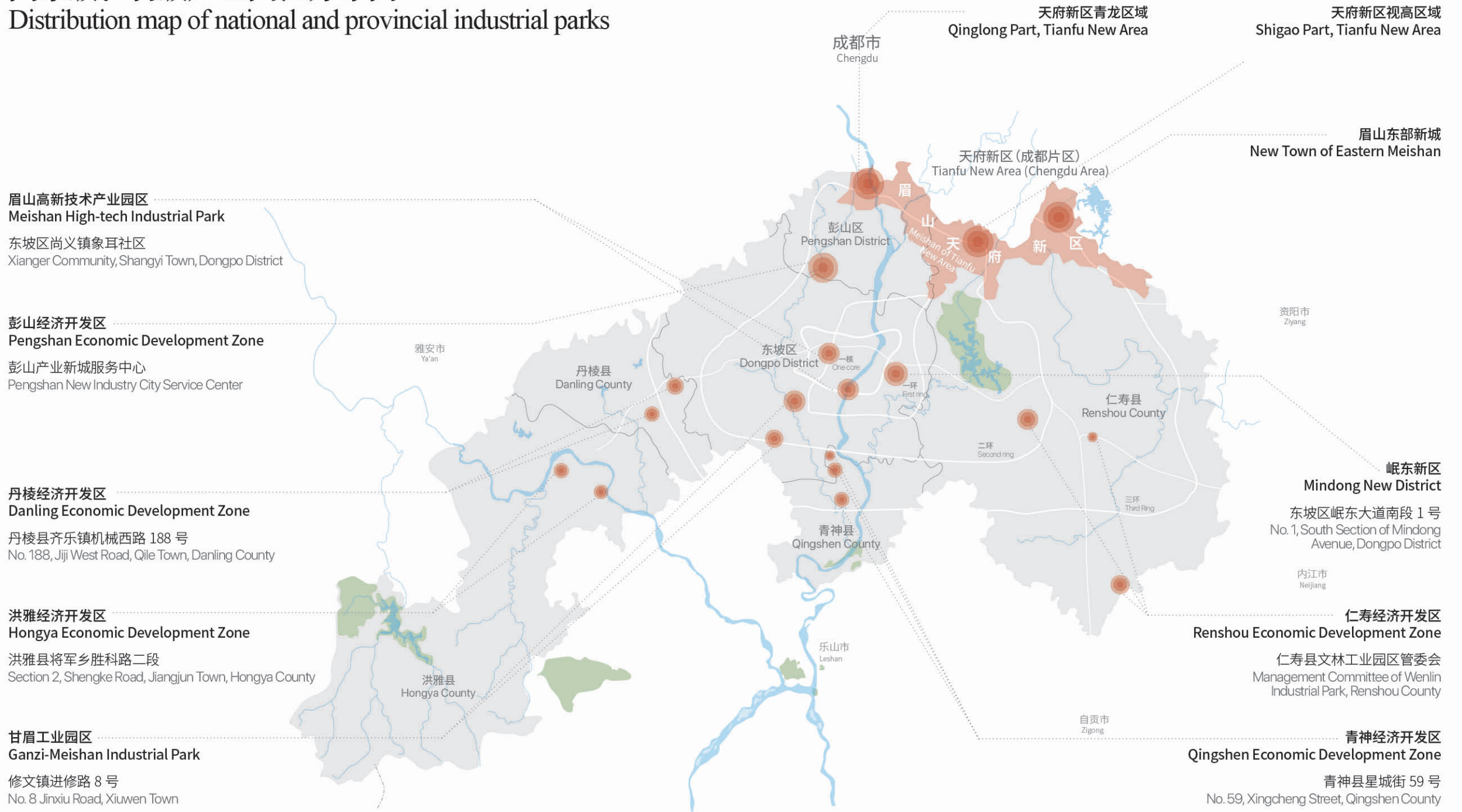
机械及高端装备制造、农产品及食品加工（竹资源利用）产业
Machinery and advanced equipment manufacturing, agricultural products, food processing and bamboo resource utilization

地址：眉山市青神县星城街59号
电话：028-38811321
Address: No. 59, Xingcheng Street, Qingshen County, Meishan City
Tel: 028-38811321



国家级、省级产业园区分布图

Distribution map of national and provincial industrial parks





PART 4



投资环境

Investment Environment



东坡水街
Dongpo Water Street

交通物流 Transportation and logistics

航空运输 Air Transportation

50公里

双流国际机场、天府国际机场距离眉山中心城区均为 50 公里
Both Shuangliu International Airport and Tianfu International Airport are only 50 kilometers away from downtown Meishan

18分钟

乘动车到双流国际机场仅需 18 分钟
It takes only 18 minutes to reach Shuangliu International Airport by train

3座

眉山规划通用机场
Meishan plans to build 3 general airports

双流国际机场、天府国际机场距离眉山中心城区均为 50 公里，车程 1 小时以内。乘动车到双流国际机场仅需 18 分钟。

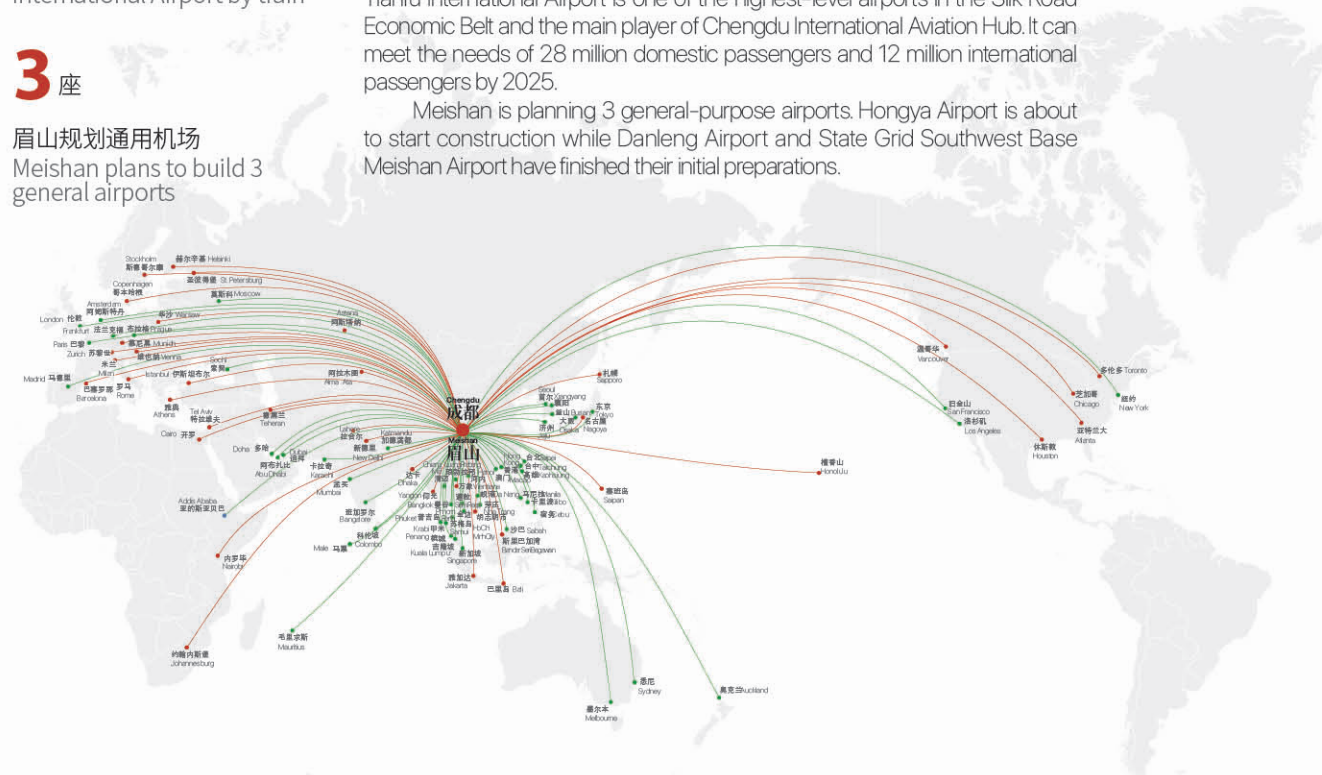
双流国际机场是全球最繁忙机场之一，旅客吞吐量连续两年位列全国第二，通达全球五大洲 200 余个城市。天府国际机场是丝绸之路经济带中等级最高的航空港之一、成都国际航空枢纽的主枢纽，可满足 2025 年 2800 万人次国内旅客吞吐量和 1200 万人次国际旅客吞吐量的需求。

眉山规划通用机场 3 座，洪雅通用机场 2023 年开工建设，正积极推进丹棱通用机场和国家电网西南基地眉山通用机场前期建设。

Both Shuangliu International Airport and Tianfu International Airport are 50 kilometers away from the central urban area of Meishan, within 1 hour by car. It only takes 18 minutes to get to Shuangliu International Airport by train.

Shuangliu International Airport is one of the busiest airports in the world, ranking second in China in terms of passenger throughput for the past two years, connecting more than 200 cities on five continents around the world. Tianfu International Airport is one of the highest-level airports in the Silk Road Economic Belt and the main player of Chengdu International Aviation Hub. It can meet the needs of 28 million domestic passengers and 12 million international passengers by 2025.

Meishan is planning 3 general-purpose airports. Hongya Airport is about to start construction while Danleng Airport and State Grid Southwest Base Meishan Airport have finished their initial preparations.

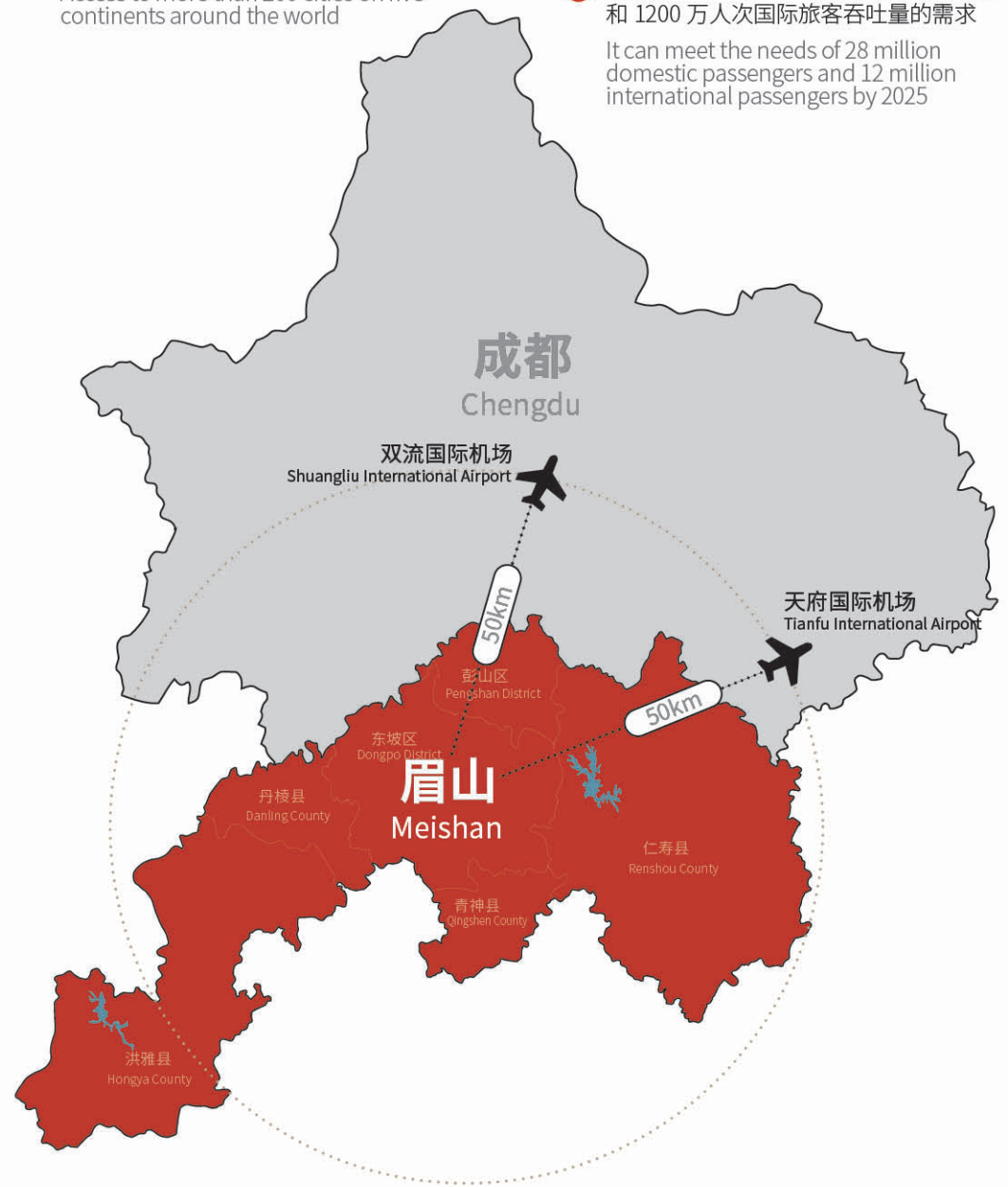


双流国际机场 Shuangliu International Airport

- 全球最繁忙机场之一
One of the busiest airports in the world
- 旅客吞吐量连续两年位列全国第二
It ranked second in China in passenger throughput for the past two years
- 通达全球五大洲 200 余个城市
Access to more than 200 cities on five continents around the world

天府国际机场 Tianfu International Airport

- 丝绸之路经济带中等级最高的航空港之一
One of the highest-level airports in the Silk Road Economic Belt
- 成都国际航空枢纽的主枢纽
The main player of Chengdu International Aviation Hub
- 可满足 2025 年 2800 万人次国内旅客吞吐量和 1200 万人次国际旅客吞吐量的需求
It can meet the needs of 28 million domestic passengers and 12 million international passengers by 2025



铁路运输 Railway transportation

眉山国际铁路港 Meishan International Railway Port

眉山国际铁路港是成都都市圈的“南向枢纽，北向节点”，已先后开行北到白俄罗斯、德国、波兰，南到老挝、越南、缅甸等地的国际班列，正加强铁路货运场站和铁路专线建设，协同成都国际铁路港构筑都市圈国际物流大通道，形成“北有青白江、南有青龙港”的格局。2022年12月，陆海新通道眉山集散中心正式揭牌运营。

Meishan International Railway Port, as a hub and node of the Chengdu metropolitan area, has launched international train services to Belarus, Germany, Poland in the north, and Laos, Vietnam, Myanmar and other places in the south. It is strengthening the freight stations and constructing special railway lines. In cooperation with Chengdu International Railway Port, it will build a large international logistics channel in the metropolitan area, forming a pattern of "Qingbaijiang in the north and Qinglong Port in the south". In December 2022, the Meishan Distribution Center of the New Land-Sea Channel was officially opened for operation.



Russia
俄罗斯

Moscow
莫斯科

Hamburg
汉堡

Lodz
罗茨

Europe
欧洲

Vienna
维也纳

Aktau
阿克套

Istanbul
伊斯坦布尔

Baku
巴库

Urumqi
乌鲁木齐

Meishan International Railway Port
眉山国际铁路港

Chengdu
成都

Chongqing
重庆

Guangzhou
广州

Myanmar
缅甸

Bangkok
曼谷

Vietnam
越南

Singapore
新加坡

公路运输

Road transportation

加快构建“四横八纵”高速路网、“五横九纵”快速路网，无缝衔接成都。天府大道眉山段、天府大道仁寿段、成乐高速扩容改造、成都经济区环线高速（第三绕城高速）、滨江大道、剑南岷东大道、工业大道、环天府新区快速通道、梓州大道南延线仁寿段、丹蒲快速路等已建成通车；梓州大道配套工程、益州大道配套工程等正加快推进。

成德眉资四市实现“公交一卡通、一码通”，已开通成都-眉山跨市公交线路5条，日均客流量超1万人，可实现直接接入成都地铁站，实现无缝换乘。

It is accelerating the construction of the four horizontal and eight vertical expressway network and the five horizontal and nine vertical highway network to seamlessly connect with Chengdu. The Meishan section of Tianfu Avenue, Renshou section of Tianfu Avenue, the expansion and renovation Chengdu-Leshan Expressway, the Ring Expressway of Chengdu Economic Zone (Chengdu's Third Ring Expressway), Binjiang Avenue, Jiannan Mindong Avenue, Industry Avenue, Pan-Tianfu New Area Expressway, the Renshou Section of Zizhou Avenue South Extension and Danpu Expressway have been completed and opened to traffic. The supporting projects of Zizhou Avenue and Yizhou Avenue are being accelerated.

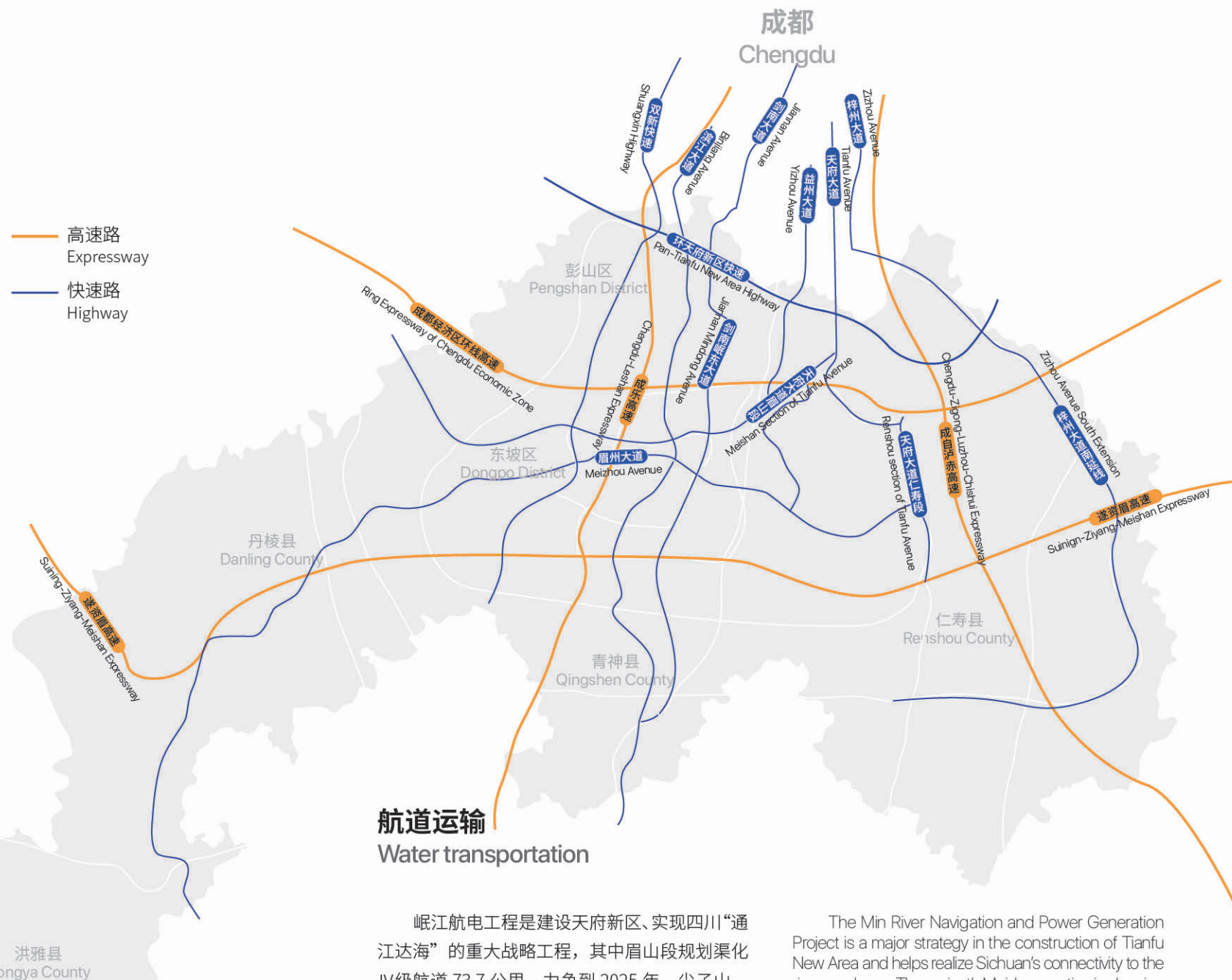
The four cities of Chengdu, Deyang, Meishan and Ziyang have realized public transportation access by one-card swiping or one-code scanning. 5 cross-city bus lines are operated, with over 10,000 passengers daily. The buses directly connect to Chengdu Metro Station with seamless transfer.



岷江汤坝航电枢纽
Tangba Navigation and Power Generation Hub on the Min River

— 高速路
Expressway

— 快速路
Highway



航道运输

Water transportation

岷江航电工程是建设天府新区、实现四川“通江达海”的重大战略工程，其中眉山段规划渠化IV级航道73.7公里。力争到2025年，尖子山、汤坝、张坎、虎渡溪和汉阳5大航电枢纽将全部建成投运，岷江复航将实现历史性突破。“十四五”期间，以打造成都平原“通江达海第一港”高规格规划的眉山港，正在进行方案研究。

The Min River Navigation and Power Generation Project is a major strategy in the construction of Tianfu New Area and helps realize Sichuan's connectivity to the rivers and seas. The project's Meishan section is planning 73.7 kilometers of Class IV waterways. By 2025, the five Navigation and Power Generation hubs of Jianzishan, Tangba, Zhangkan, Huduxi and Hanyang will all be completed and put into operation. The renavigation of the Min River will be a historic breakthrough. During the 14th Five-Year Plan period, the Meishan Port will undergo implementation studies to plan a high-standard port that connects the Chengdu Plain to major rivers and seas.

人才资源 Human resources

眉山高校数量全省第三，现有大学 12 所，在校学生 12 万余人；高职院校 7 所，在校学生近 7 万人。全市第一所 985 高校四川大学眉山校区已于 2022 年开工建设。近年来，与清华大学、香港大学、电子科技大学、重庆大学、北京外国语大学、深圳大学等知名高校达成校地合作，全市教育资源不断优化，科技创新能力持续提升。

同时，眉山紧邻成都，可与成都共享四川大学、电子科技大学、西南财经大学、西南交通大学等 56 所高等院校每年 15 万大学毕业生的人才资源。

There are 12 universities with nearly 120,000 students and 7 vocational colleges with nearly 70,000 students in Meishan, ranking third in Sichuan. The Meishan campus of Sichuan University, the first Project 985 university in Meishan, started construction in 2022. In recent years, Meishan is working closely with Tsinghua University, Hong Kong University, University of Electronic Science and Technology of China, Chongqing University, Beijing Foreign Studies University, Shenzhen University and other well-known universities. The city's educational resources and its technological innovation capabilities keep improving.

Meanwhile, Meishan is close to Chengdu and can share with Chengdu a talent pool of 150,000 college graduates from 56 colleges and universities including Sichuan University, University of Electronic Science and Technology of China, Southwestern University of Finance and Economics, and Southwest Jiaotong University.



“985 工程”大学
1 “Project 985”
university

1 所

大学
12 universities

12 所



高职院校
7 vocational
colleges

7 所

投资服务 Investment services

眉山营商环境全省领先，先后荣获“中国政务服务突出贡献奖”、“全国政务服务创新先进单位”、“行政效能建设”先进、深化“放管服”改革优化营商环境工作先进等荣誉称号。四川省网上政务服务能力社会满意度测评，眉山位列全省第 3。

全力打造“眉事无忧”政务服务品牌，率先开展“红色代办”“一网通办”“小时清单”等服务，全面实施“眉山速度”“眉山服务”“眉山成本”“眉山诚信”营商环境示范工程，企业开办实现“4 小时 1 环节 0 成本”。杉杉锂电项目从开工到投产仅 7 个月，中创新航项目用地报批速度刷新全省纪录。

Meishan offers the most inviting business environment in Sichuan province. Meishan has won the China Government Service Outstanding Contribution Award, the National Government Service Innovation Award, Administrative Efficiency Award, and other business environment honors and titles. In 2020, Meishan ranked third Sichuan Province's online government service satisfaction survey. The continuous improvement of government efficiency has ensured the rapid implementation of investment projects.

It is making every effort to build the a carefree and seamless government service system. Meishan provides highly-efficient business permit services that fully reflects tge Meishan Speed with integrity and super-low cost. A business permit can be ready within 4 hours at one stop and zero cost. It took 7 months to go from ground-breaking to full operation for Shanshan Lithium Battery Project. The CALB project also set a speed record in Sichuan province in terms of land approval.



- 眉山市政务服务管理局
Meishan Government Service Administration
电话 /Tel: 028-38166111
- 天府新区眉山管委会行政审批局
Administrative Approval Bureau of Meishan
Management Committee of Tianfu New Area
电话 /Tel: 028-36333111
- 东坡区行政审批局
Administrative Approval Bureau of Dongpo District
电话 /Tel: 028-38119021
- 彭山区行政审批局
Administrative Approval Bureau of Pengshan District
电话 /Tel: 028-37634072

- 仁寿县行政审批局
Administrative Approval Bureau of Renshou County
电话 /Tel: 028-36295116
- 洪雅县行政审批局
Administrative Approval Bureau of Hongya County
电话 /Tel: 028-38877766
- 丹棱县行政审批局
Administrative Approval Bureau of Danling County
电话 /Tel: 028-37209488
- 青神县行政审批局
Administrative Approval Bureau of Qingshen County
电话 /Tel: 028-38862991



四川政务服务
Sichuan Government
Service



眉山政务服务
Meishan Government
Service



四川大学眉山校区
Sichuan University- Meishan Campus

生活配套 Amenities

教育服务 Educational Services

公众对教育总体满意度全省第2。全市公办学校579所，民办学校411所，拥有省级示范普通中学11所。清华附中、仁寿一中、眉山中学、眉山一中、北外附属东坡外国语学校、冠城七中实验学校、眉山东辰国际学校、仁寿成都外国语学校等教育资源汇集。有文化馆7座、文化站133个、图书馆7座、博物馆6座、美术馆11座，可为入驻企业员工子女提供优质的教育服务。

The public satisfaction with Meishan's educational quality ranked second in Sichuan province. There are 579 public schools, 411 private schools, and 11 provincial exemplary high schools. These include Tsinghua High School, Renshou No. 1 Middle School, Meishan Middle School, Meishan No. 1 Middle School, Dongpo Foreign Language School Affiliated to Beijing Foreign Studies University, Guancheng No. 7 Middle School Experimental School, Meishan Dongchen International School, and Renshou Chengdu Foreign Language School. There are 7 cultural centers, 133 cultural stations, 7 libraries, 6 museums, and 11 art galleries, which provide high-quality educational services for the children of corporate employees.

清华附中眉山天府学校
Tsinghua High School-Meishan Tianfu Campus



眉州文化村·东坡书院
Meizhou Cultural Village, Dongpo



公办学校
579 public schools

579 所

民办学校
411 private schools

411 所

省级示范高中
11 provincial exemplary
high schools

11 所



医疗服务 Healthcare services



国家区域医疗中心
China's Regional
Medical Center: 1

1 家

三级甲等医院
Tertiary hospitals
(Class A): 5

5 家

三级医院
Tertiary hospitals
(Class B): 13

13 家

全省第一个国家区域医疗中心已落户眉山。现有四川大学华西第二医院天府医院·四川省儿童医院、四川大学华西医院眉山医院、华西第二医院眉山市妇女儿童医院、成都中医药大学附属眉山医院、西南医科大学附属天府医院等三级甲等医院5家，三级医院13家。居民医保率先实现省内异地就医直接联网结算、成都都市圈社保无障碍转移。

Meishan is home to China's Regional Medical Center, which was the first in Sichuan province. There are 5 class-A tertiary hospitals and 13 class-B tertiary hospitals including Tianfu Hospital of West China Second Hospital of Sichuan University (Sichuan Children's Hospital), Meishan Hospital of West China Hospital of Sichuan University, Meishan Women and Children's Hospital of West China Second Hospital, Meishan Hospital Affiliated to Chengdu University of Traditional Chinese Medicine, and Tianfu Hospital Affiliated to Southwest Medical University. Meishan is one of the first cities to offer its residents with direct health insurance reimbursement for medical treatment in different places in the province, and free transfer of social insurance in the Chengdu metropolitan area.



四川大学华西医院眉山医院
West China Hospital of Sichuan University-Meishan Hospital



国家区域医疗中心
China's Regional Healthcare Center

金融保险

Finance and insurance

入驻广发银行、光大银行、四川银行、成都银行、长城华西银行、乐山银行、泸州银行、成都农商银行等银行业金融机构 22 家，人保财险、平安财险、太平洋财险、中航安盟、太平财险等保险公司 34 家。辖区内贷款余额增速连续两年居全省第 2。

22 banking financial institutions are present in Meishan, including China Guangfa Bank, China Everbright Bank, Bank of Sichuan, Bank of Chengdu, Great Wall West China Bank, Leshan Bank, Luzhou Bank, Chengdu Rural Commercial Bank, and 34 insurance companies, including PICC Property Insurance, Ping An Property Insurance, Pacific Property Insurance, AVIC UNITA, Taiping Property Insurance. The growth rate of loan balance in Meishan ranked second in the province for the past two years.



银行业金融机构
22 banking financial institutions

22家

保险公司
34 insurance companies

34家

宾馆酒店

Hotels

拥有岷江东湖饭店、长岛天堂洲际酒店、希尔顿酒店、嘉斯曼国际酒店、恒大酒店、丹棱锦江饭店、青神大酒店、岷江东湖瓦屋山居度假酒店等星级宾馆和众多商务酒店，为商务、政务、会议、度假提供全面优质的服务。

Meishan offers star-rated hotels such as Minjiang East Lake Hotel, Changdao Paradise Intercontinental Hotel, Hilton Hotel, Gasman International Hotel, Evergrande Hotel, Danling Jinjiang Hotel, Qingshen Hotel, Minjiang East Lake Wawushanju Resort Hotel and many business hotels. They provide comprehensive and high-quality services for clients who come for government affairs, conferences, and vacations.



长岛天堂洲际酒店
InterContinental Long Island Paradise



伊藤洋华堂·王府井
Ito Yokado, Wangfujing



万达广场
Wanda Plaza



央视小春晚
CCTV's Little Spring Festival Gala



诗乐舞《大国芬芳》亮相国家大剧院
"Fragrance of A Great Country - Poetry, Music and Dance" was presented at China National Center for the Performing Arts

购物休闲 Shopping and leisure

拥有伊藤洋华堂、王府井、万达广场、爱琴海、IFC 国际时尚城、大润发、永辉、宏远上铖等众多知名商业品牌，城市生活便利，购物休闲选择众多。在眉举办联合国教科文组织历史村镇的未来眉山体验之夜、中国 - 中东欧国家音乐周眉山分会场、央视“小春晚”、话剧《苏东坡》等各类大型文艺演出，市民精神文化生活更加丰富，城市品位显著提升。

It has many well-known commercial complexes such as Ito-Yokado, Wangfujing, Wanda Plaza, Aegean Sea, IFC International Fashion City, RT-Mart, Yonghui and Hongyuan Shangcheng. The city life is convenient and choice-rich for shopping and leisure. Various elegant and large-scale theatrical performances and shows were presented, including the Future of Meishan Experience Night of the UNESCO Historic Villages and Towns, the Meishan Branch of the China-Central and Eastern European Countries Music Week, the CCTV's Little Spring Festival Gala, and the drama of Su Dongpo, enriching the cultural life of the citizens and visitors.

要素保障

Factors of production

人力资本及社保数据来源：眉山市人力资源和社会保障局、眉山市医疗保障局

水电气数据来源：眉山市发展和改革委员会

Sources of human capital and social security data: Meishan Human Resources and Social Security Bureau, and Meishan Medical Security Bureau
Source of water, electricity and electricity data: Meishan Municipal Development and Reform Commission

人力资本 (2022 年参考价)

Human capital (reference price in 2022)



分类 Classification	月工资 (元) Monthly salary (yuan)
管理人员 Manager	3000-5000
技术工人 Professional worker	3000-4000
熟练工人 Skilled worker	2000-3000
非熟练工人 Unskilled worker	1650-2000

本地最低工资标准 (2022 年度)

Local Minimum Wage Standards (2022)



分类 Classification	工资 (元) Salary (yuan)
月度最低工资标准 Monthly minimum salary	1650
非全日制小时工最低工资标准 Minimum wage standard for part-time hourly workers	17.4

企业缴纳职工社会保险 (2022 年度)

Corporate payment of employee social insurance (2022)



项目 Project	人员缴纳类别 Personnel payment category	城市职工 City workers
基本养老保险 Basic retirement insurance	单位缴纳 / Corporate payment	16%
	个人缴纳 / Personal payment	8%
职工基本医疗保险与生育保险 Employee basic health insurance and maternity insurance	单位缴纳 Corporate payment	6.8% (含生育保险) 6.8% (including maternity insurance)
	个人缴纳 Personal payment	2%
失业保险 Unemployment insurance	单位缴纳 Corporate payment	0.6%
	个人缴纳 Personal payment	0.4%
工伤保险 Injury insurance	单位缴纳 Corporate payment	基准费率按照八类行业确定 (0.6%-3.5%) The base rate is determined according to eight types of industries (0.6%-3.5%)

天然气价格 (现行标准)

Gas prices (current standards)



用气类别 Gas category	单位 (元 / 立方米) Unit price (yuan/cubic meter)	
居民生活用气 Residential gas	2.25 (合表用户) 2.25 (shared meter users)	
非居民生活用气 Non-residential gas	2.37 (非采暖季) 2.37 (non-heating season)	2.70 (采暖季) 2.70 (heating season)
	2.30 (非采暖季) 2.30 (non-heating season)	2.50 (采暖季) 2.50 (heating season)
甘眉园区工业用气 Industrial Gas in Ganzi-Meishan Industrial Park	2.30 (非采暖季) 2.30 (non-heating season)	

电力价格 (不含政府性基金及附加)

Electricity prices (excluding government funds and surcharges)



用电分类 Electricity Classification	电度电价 (元 / 千瓦时) Unit price (yuan/kWh)					基本电价 Basic electricity price	
	不满 1 千伏 Less than 1kV	1-10 千伏 1-10kV	35-110 千伏 35-110kV	110 千伏 110kV	220 千伏及以上 220kV and above	最大需量 元 / 千瓦 / 月 Maximum demand Yuan/kw/month	变压器容量 元 / 千伏安 / 月 Transformer capacity Yuan/kVA/month
居民生活 (一户一表) Residential (one meter for one household)	0.5464	0.5364	0.5364				
工商业及其他用电 (单一制) (两部制) Industrial and commercial and other electricity (Unitary system) (Two-part system)	0.6485	0.6363	0.6242				
工商业及其他用电 (两部制) (原大工业用电) Industrial and commercial and other electricity (two-part system) (formerly large industrial power consumption)	0.5601	0.5501	0.5401				
农业生产用电 Electricity for agricultural production	0.2521	0.2421	0.2321				

注：甘眉工业园区内部分企业可享受甘孜州留存电量政策，即在大规模工业用地价格基础上优惠 0.12-0.15 元 / 千瓦时。

Note: Some enterprises in the Ganzi-Meishan Industrial Park can enjoy the power reserve policy of Ganzi Prefecture, that is, a discount of 0.12-0.15 yuan/kWh on the basis of the price for large-scale industrial use.

用水价格 (现行标准 / 主城区)

Water prices (current standard/main urban area)



类别 Category	自来水价格 (元 / 吨) Tap water price (yuan/ton)	污水处理费 (元 / 吨) Sewage treatment fee (yuan/ton)	合计 (元 / 吨) Total (yuan/ton)
居民生活用水 (含表用户) Residential water (including meter users)	2.10	0.95	3.05
居民生活用水 (一户一表) Residential water (one meter for one household)	0-12T	2.05	0.95
居民生活用水 (一户一表) Residential water (one meter for one household)	12-18T	3.08	0.95
工业用水 (甘眉工业园区) Industrial water (Ganzi-Meishan industrial park)	3 (2.05)	1.1 (1.2)	4.1 (3.45)
商业用水 Commercial water	3.0	1.6	4.6
特种行业用水 (洗浴及洗车行业除外) Water for special industries (bathing and car washing excluded)	5.05	1.9	6.95

外资政策

Foreign investment policy

《外商投资准入特别管理措施（负面清单）》《鼓励外商投资产业目录》及相关政策，继续适用 2022 年鼓励目录。

主要包括

- 1 对于鼓励类外商投资项目，在投资总额内进口自用设备以及按照合同随前述设备进口的技术和配套件、备件，除《外商投资项目不予免税的进口商品目录》和《进口不予免税的重大技术装备和产品目录》所列商品外，免征关税；
- 2 对于符合条件的西部地区和海南省鼓励类产业的外商投资企业，减按 15% 征收企业所得税；
- 3 对于集约用地的鼓励类外商投资工业项目优先供应土地，在确定土地出让底价时可按不低于所在地土地等别相对应全国工业用地出让最低价标准的 70% 执行。

外商投资信息报告有关事项

- 1 外国投资者直接在中国境内投资设立公司、合伙企业的，外国（地区）企业在中国境内从事生产经营活动的，外国（地区）企业在中国境内设立从事生产经营活动的常驻代表机构等，应按照《外商投资信息报告办法》的规定，通过企业登记系统在线提交初始报告、变更报告，通过国家企业信用信息公示系统在线提交年度报告。注销报告相关信息由市场监管总局向商务部共享，外国投资者或者外商投资企业无需另行报送。外商投资举办的投资性公司、创业投资企业和以投资为主要业务的合伙企业在境内投资设立企业的，应当参照前款规定报送投资信息。
- 2 境内非外商投资企业变更为外商投资企业，应于办理变更登记时在线提交初始报告。

- 3 外商投资企业实际控制人变更、进口设备减免税信息变更、住所未变更但所在特殊经济区域变更以及外商投资的股份有限公司除发起人之外的股东基本信息变更等无需到市场监管部门办理变更登记的事项，应于变更事项发生后 20 个工作日内通过企业登记系统提交变更报告。外国投资者或者外商投资企业提交变更报告时，只需填报变更事项，其他未发生变更的事项无需重复填报。
- 4 外商投资企业境内投资（含多层次投资）的企业初始报告、变更报告、注销报告和年度报告，由市场监管总局向商务部共享，企业无需另行报送。
- 5 初始、变更报告存在未报、错报、漏报的，外国投资者或者外商投资企业应通过企业登记系统进行补报或更正；6 月 30 日前，年度报告存在错报、漏报的，外国投资者或者外商投资企业应通过国家企业信用信息公示系统进行补报或更正；7 月 1 日起，年度报告存在错报、漏报的，外国投资者或者外商投资企业应向商务主管部门申请，通过外商投资信息报告管理系统（网址：...）进行补报或更正；7 月 1 日起，外国投资者或者外商投资企业未按时提交年度报告的，应根据商务主管部门、市场监管部门的相关规定办理相关手续。
- 6 不涉及国家规定实施外商投资准入特别管理措施的外商投资企业，如 2019 年 12 月 31 日前已在市场监管部门办理设立登记，或发生《外商投资企业设立及变更备案管理暂行办法》第六条、第七条规定的变更事项，但尚未办理外商投资企业设立或变更备案，2020 年 1 月 31 日前仍可通过外商投资综合管理系统办理备案。2020 年 1 月 1 日起设立或发生变更的外商投资企业，无需办理外商投资企业设立或变更备案，只需根据《外商投资信息报告办法》和本公告的要求报告投资信息。
- 7 各地商务主管部门将在企业登记系统和国家企业信用信息公示系统上公布联系人和联系方式，为外国投资者和外商投资企业填报提供具体指导。

The 2020 Special Administrative Measures for Foreign Investment Access (Negative List), Catalogue of Industries Encouraging Foreign Investment and related policies will continue to apply.

Main Points

- 1 For encouraged foreign-invested projects, the import of self-use equipment within the total investment, as well as technology and supporting parts and spare parts imported with the aforementioned equipment in accordance with the contract, except for the commodities listed in the Catalog of Technical Equipment and Products, shall enjoy tariff exemption;
- 2 For eligible foreign-invested enterprises in encouraged industries in West China and Hainan Province, corporate tax will be levied at a reduced rate of 15%;
- 3 For the encouraged foreign-invested industrial projects with intensive use of land, priority supply of land is given. When determining the floor price for the transferred land, it can be set at no less than 70% of the minimum corresponding national price for industrial land transfer.

Matters related to foreign investment reporting

- 1 Foreign investors who directly invest in the establishment of companies and partnerships in China, and foreign (regional) enterprises which engage in production and business activities in China, and/or set up permanent representative offices in China to engage in production and business activities should act in accordance with the *Foreign Investment Information Reporting Measures*. The initial and revised report shall be submitted online through the enterprise registration system, and the annual report shall be submitted online through the national enterprise credit information publicity system. Information related to the cancellation report shall be shared by the State Administration for Market Regulation with the Ministry of Commerce, and foreign investors or foreign-invested enterprises do not need to submit it separately. Foreign-funded investment companies, venture capital enterprises, and partnerships with investment as the main business which invest in China shall submit investment information in accordance with the provisions of the preceding article.
- 2 When a domestic non-foreign-invested enterprise changes to a foreign-invested enterprise, an initial report should be submitted online when the change registration is processed.
- 3 Report of the change of the actual controller of the foreign-invested company, the change of the tax reduction and exemption information for imported equipment, the change of the special economic region but not the change of the domicile, and the change of the basic information of shareholders other than the initiator of the foreign-invested company limited should be submitted through the enterprise registration system within 20 working days after the change occurs, with no need to go to the market supervision department. When a foreign investor or foreign-invested enterprise submits a change report, only the changed items need to be filled in, and other items that have not been changed need not be repeated.
- 4 The initial report, change report, cancellation report and annual report of foreign-invested enterprises which invest in Chinese enterprises (including multi-level investment) shall be shared between the State Administration for Market Regulation and the Ministry of Commerce, and foreign-invested enterprises do not need to submit separate reports.
- 5 If there are unreported, wrongly reported, or under-reported items in the initial or change report, the foreign investor or foreign-invested enterprise shall make a supplementary report or correction through the enterprise registration system. Before June 30, if the annual report contains wrongly reported or under-reported, the foreign investor or foreign-invested enterprises shall make supplementary reports or corrections through the National Enterprise Credit Information Publicity System. Starting from July 1, if there are misstatements or omissions in the annual report, foreign investors or foreign-invested enterprises shall apply to the competent commerce department and make supplementary reports or corrections through the foreign investment information report management system (website:) will make supplementary reports or corrections. Starting from July 1st, if foreign investors or foreign-invested enterprises fail to submit their annual reports on time, they shall have to follow the relevant regulations required by the competent commercial and market supervision authorities.
- 6 Foreign-invested enterprises to which the Special Administrative Measures for Foreign Investment Access do not apply could report through the integrated foreign investment management system before January 31, 2020 if they had already registered with the market supervision department before December 31, 2019, or if they made the changes stipulated in Articles 6 and 7 of the Interim Measures for the Administration of the Establishment and Change of Foreign-invested Enterprises, but the registration of the establishment or modification of foreign-invested enterprises had not been completed. Foreign-invested enterprises established or changed from January 1, 2020 on do not need to file for the establishment or change of foreign-invested enterprises, but only need to report investment information in accordance with the requirements of the Foreign Investment Information Reporting Measures and this announcement.
- 7 Local commercial authorities will publish the contact person and contact information on the enterprise registration system and the national enterprise credit information publicity system. This will provide specific guidance for foreign investors and foreign-invested enterprises in filling out the reports.

联系方式

Contact information

市经济合作局 Meishan Municipal Economic Cooperation Bureau	028-38165120/38165522
市政府驻京联络处经济合作部 Meishan Municipal Government Economic Cooperation Bureau in Beijing	13158778677
市政府驻上海经济合作局 Meishan Municipal Government Economic Cooperation Bureau in Shanghai	13778883965
市政府驻广东经济合作局 Meishan Municipal Government Economic Cooperation Bureau in Guangdong	13778808111
市政府驻东北经济合作局 Meishan Municipal Government Economic Cooperation Bureau in Northeast China	15984344883
市政府驻成都经济合作局 Meishan Municipal Government Economic Cooperation Bureau in Chengdu	13778810925
天府新区眉山管委会经济合作局 Economic Cooperation Bureau of Meishan Management Committee, Tianfu New Area	028-36069555
东坡区经济合作局 Dongpo District Economic Cooperation Bureau	028-38224666
彭山区经济合作和外事工作局 Pengshan District Economic Cooperation and Foreign Affairs Bureau	028-37628829
仁寿县经济合作局 Economic Cooperation Bureau of Renshou County	028-36222347
洪雅县经济合作局 Hongya County Economic Cooperation Bureau	028-37403556
丹棱县经济合作局 Danling County Economic Cooperation Bureau	028-37204678
青神县商务局 Qingshen County Bureau of Commerce	028-38817666
眉山高新技术产业园区经济科技局 Economic Cooperation Bureau of Meishan High-tech Industrial Park	028-38182253
甘孜 - 眉山工业园区经济合作局 Economic Cooperation Bureau of Ganzi-Meishan Industrial Park	028-38569766